

# PowerMod® HP "A" Series Male Dual Pole Panel Mount Connector Assembly Instructions



Contact



Connector Housing



Keeper



Screw & Washer



Guide Post

- 1) Strip wire per the picture shown :

7/8 inch  
| [22.2 mm] |



- 2) Insert wire into the contact male contact making sure wire bottoms out in the barrel. Make sure all strands are in the contact barrel. Select a crimping tool system from the chart below.

| Wire Size                   | Pneumatic Production Tool |         |             |                  | Hand Tool |         |         |                  |
|-----------------------------|---------------------------|---------|-------------|------------------|-----------|---------|---------|------------------|
|                             | Part Number               | Die P/N | Locator P/N | Number of Crimps | Hydraulic | Battery | Die P/N | Number of Crimps |
| #2 AWG<br>35mm <sup>2</sup> | 1387G2                    | 1303G13 | 1304G19     | 2                | 1387G3    | 1370    | 1322G7  | 2                |
| 25mm <sup>2</sup>           | 1387G2                    | 1303G13 | 1304G19     | 2                | 1387G3    | 1370    | 1322G11 | 2                |
| #4 AWG                      | 1387G2                    | 1303G14 | 1304G19     | 2                | 1387G3    | 1370    | 1322G8  | 2                |
| 16mm <sup>2</sup>           | 1387G2                    | 1303G14 | 1304G19     | 2                | 1387G3    | 1370    | 1322G10 | 2                |
| #6 AWG                      | 1387G2                    | 1303G14 | 1304G19     | 2                | 1387G3    | 1370    | 1322G9  | 2                |

- 3) Crimp the contact barrel.



- 3a) Repeat steps 1 - 3 for second contact.

- 4) Insert the crimped contacts into the contact keeper. Contacts should fit snugly in each "C" shaped opening.



- 5) When the male panel mount connector is being used in a blindmate panel to panel application, the guide post must be assembled prior to insertion of the keeper/contact assembly. From the face of the connector, insert the post into the hole between the contact openings in the housing with the pointed end facing outward. Secure the post from the inside of the housing using the metal washer and screw provided. Torque the screw to 5 in-Lbs.(0.57Nm)\* This step should be bypassed if the application is panel connector to wire connector.



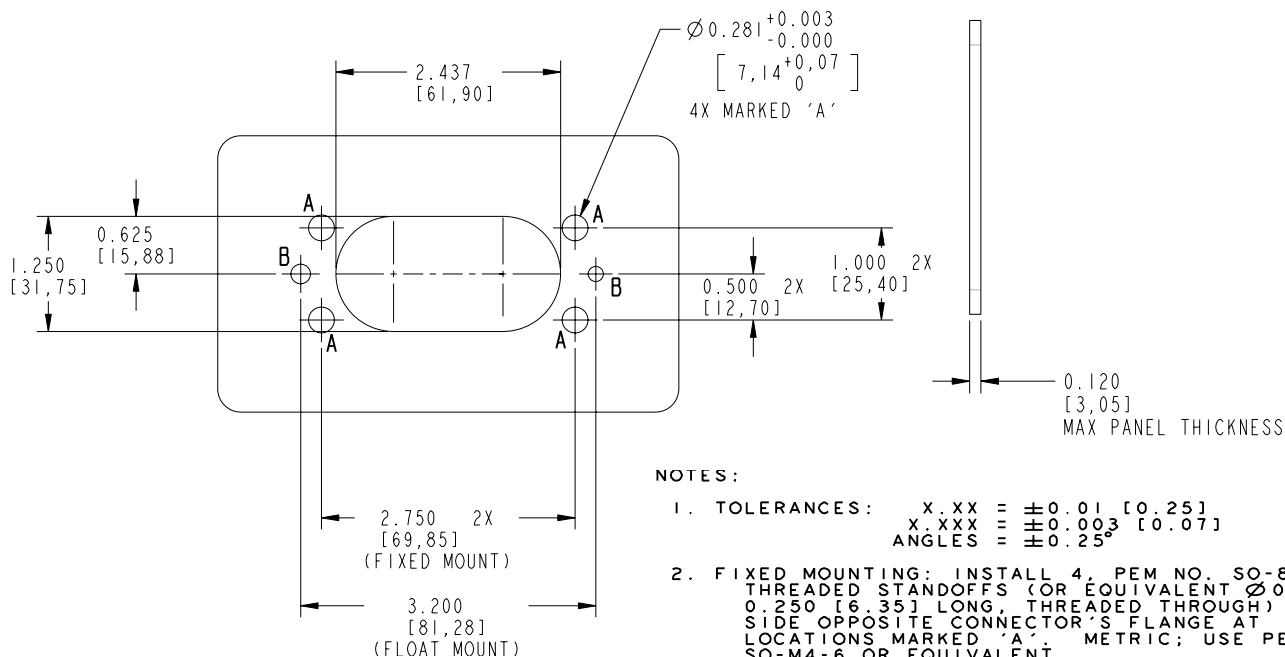
# PowerMod® HP "A" Series Male Dual Pole Panel Mount Connector

## Page 2

- 6) Slide keeper/contact assembly into the connector housing verifying that the wire/contact is located in the proper position (A or B). Keeper will snap into the openings on the top and bottom of the connector housing. Visually inspect the openings to assure the keeper is seated. The C shaped raised area on both sides of the keeper should be clearly visible. If required, the contact/keeper assembly can be removed from the housing using a pair of needle nose pliers.



- 7) Optional Connector Key – A blue plastic key is included for panel connector to wire connector applications where multiple connections might be made. The key acts as a mechanical block to assure only the right pair of connectors are mated. The key is inserted into the hexagonal hole from the front of each connector with the triangular portion facing out. The raised pointer on the front surface of the triangular area should be aimed at the number (1-6) that corresponds with the number that the pointer on the key in the mating connector half is aimed at (i.e. both keys pointed at 2). This will assure proper mating. Connector keys are not used in panel to panel applications.



### NOTES:

- TOLERANCES:
  - X.XX =  $\pm 0.01$  [0.25]
  - X.XXX =  $\pm 0.003$  [0.07]
  - ANGLES =  $\pm 0.25^\circ$
- FIXED MOUNTING: INSTALL 4. PEM NO. SO-832-8 THREADED STANDOFFS (OR EQUIVALENT  $\varnothing 0.280$ , 0.250 [6.35] LONG, THREADED THROUGH) FROM SIDE OPPOSITE CONNECTOR'S FLANGE AT LOCATIONS MARKED 'A'. METRIC; USE PEM NO. SO-M4-6 OR EQUIVALENT.
- FIXED CONNECTOR REQUIRES AND AREA OF THE PANEL 3.62 [92] WIDE, 1.59 [40.4] HIGH.
- FLOAT MOUNTING:
  - METHOD 1: INSTALL 2, 8-32 OR M4 CAPTIVE STUDS FROM SIDE OPPOSITE CONNECTOR'S FLANGE AT LOCATIONS MARKED 'B'. PROTRUDING LENGTH OF STUD MUST BE AT LEAST 0.50 [12.7]. (FOR USE WITH KEYP NUT WITH CAPTIVE CONICAL WASHER AND SHOULDER WASHER 2-8555PI)
  - METHOD 2: INSTALL 2, 8-32 OR M4 CAPTIVE NUTS FROM SIDE OPPOSITE CONNECTOR'S FLANGE AT LOCATIONS MARKED 'B'. (FOR USE WITH SEMS SCREW WITH CAPTIVE CONICAL WASHER AND SHOULDER WASHER 2-8555PI)
- FLOATING CONNECTOR REQUIRES AN AREA OF THE PANEL 4.00 [101.6] WIDE, 1.85 [47] HIGH.

\* Nm=.114 x inches-lbs

**WARNING**  
NEVER WORK WITH LIVE CONDUCTORS

### PATENTS AND TRADEMARKS

This product is Patent Pending.  
"PowerMod", "A" in a circle and "Anderson Power Products" are registered U.S. and foreign trademarks of Anderson Power Products, 13 Pratts Junction Road, P.O. Box 579, Sterling, MA 01564 USA

1S6438 ASM-ADPPMM REV03

HEADQUARTERS: 13 Pratts Junction Road, P.O. Box 579, Sterling, MA 01564 T:978-422-3600 F:978-422-3700

EUROPE: Rately Road, Fermoy Co. Cork, Ireland T:353-(0)25-32277 F:353-(0)25-32296

ASIA/PACIFIC: IDEAL Anderson Asia Pacific Ltd., Unit 922-928 Topsail Plaza, 11 On Sum Street, Shatin N.T., Hong Kong T:852-2636-0836 F:852-2635-9036

www.andersonpower.com