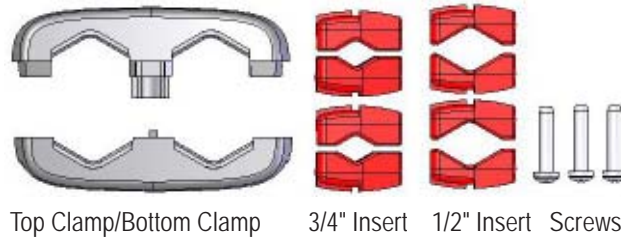


PowerMod® HP “B” Series Dual Pole Strain Relief Assembly Instructions

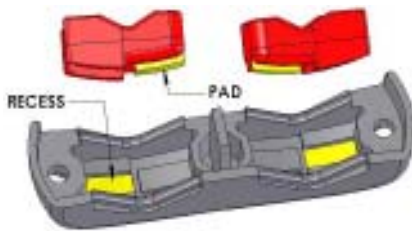
The optional “B” Series DP strain relief kit consists of four different plastic parts and three metal screws as shown in the illustration below: top clamp, bottom clamp, 3/4" [19.0] insert(4), 1/2" [12.7] insert(4), and three self tapping screws. The outside diameter of the cable will determine which components are needed to properly strain relief the cable. Note that for illustration purposes, the color of the components may be different than shown.



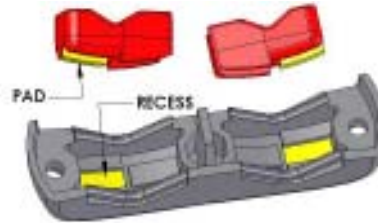
I) Strain Relief Insert Selection

The “B” Series DP strain relief is designed to be used with cable OD from .45 [11.4] to .84 [21.3]. In order to provide sufficient strain relief on a wide range of cable sizes, the strain relief kit comes with two different size inserts. Each insert may be placed in the top and bottom clamp pockets in two different orientations, providing further range taking ability.

Center pad of insert mis-aligned with the recess in the clamp



Center pad of insert aligned with the recess in the clamp



In total, the strain relief inserts and clamps will yield five different cable openings. The picture below illustrates the five different configurations from smallest opening to largest opening.



Now determine the correct insert configuration for your cable:

1. Measure the outside diameter of the cable. Note that the outside diameter measurement should consist of conductor and insulation.
2. Find your cable size in the table.
3. Following across the row, select the inserts needed.
4. Line up the inserts with the clamp halves so that they will sit at the correct depth as defined in the chart.
5. Fit the two clamp halves together and measure the max opening and verify that it matches with the table.
6. To remove and rotate inserts, lightly tap the clamp half with the insert facing down, or use a small screwdriver to pry out the insert.

| Cable OD (in) | Cable OD (mm) | Insert Needed | Depth | Max Opening | Picture Match |
|---------------|---------------|---------------|---------|-------------|---------------|
| .45-.58 | 11.4-14.7 | 1/2" | Shallow | .40[10.2] | A |
| .57-.67 | 14.5-17.0 | 1/2" | Deep | .51[13.0] | B |
| .65-.74 | 16.5-18.8 | 3/4" | Shallow | .60[15.2] | C |
| .74-.84 | 18.8-21.3 | 3/4" | Deep | .71[18.0] | D |
| .84-.94 | 21.3-23.9 | NONE | N/A | .82[20.8] | E |

Note: the table is to be used as a guideline for selecting inserts. Thickness and compressibility of the cable jacket may affect insert selection.

PowerMod® HP “B” Series Dual Pole Strain Relief

Page 2

II) Installation of Cable Clamp on “B” Series DP housing

The “B” Series DP integral strain relief attaches to the back end of the DP housing via the shoulder screw that is used to secure the cover. The strain relief is attached as part of the connector assembly. When the strain relief is used, the baffles are not needed. Follow the instructions below for correct use:

1. Assemble the crimped contacts into the DP housing. Leave the cover off. Have the open side of the housing facing up.
2. Lay top clamp assembly face up underneath the cables. Roughly line up the ID of the boss on the strain relief with the through hole in the housing. Figure 1
3. Install the top cover onto the housing. Line up the shoulder screw through top clamp boss and into the threaded insert in the housing. Tighten the shoulder screw to 5 in-Lbs.(0.57Nm)*. Figure 2.
4. Lay the bottom clamp half of the strain relief onto the top half, lining up the screw holes. Evenly torque the self-tapping screws to 2 in-Lbs.(0.22Nm)*. Figure 3.



Figure1



Figure 2

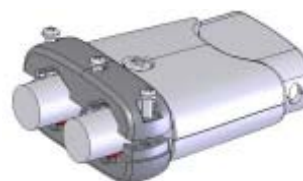


Figure3

III) Installation of Cable Clamp on “B” Series DP RA

The “B” Series DP integral strain relief attaches to the bottom DP RA housing via the shoulder screw that is used to secure the back cover. The strain relief is attached as part of the connector assembly and should be used at all times with this connector. Follow the instructions below for correct use:

1. Assemble the crimped contacts into the DP RA housing. Leave the cover off. Have the open side of the housing facing up.
2. Lay top clamp assembly face up underneath the cables. Roughly line up the ID of the boss on the strain relief with the through hole in the housing. Figure 1
3. Install the top cover onto the housing. Line up the shoulder screw through top clamp boss and into the threaded insert in the housing. Tighten the shoulder screw to 5 in-Lbs.(0.57Nm)*. Figure 2.
4. Lay the bottom clamp half of the strain relief onto the top half, lining up the screw holes. Evenly torque the self-tapping screws to 2 in-Lbs.(0.22Nm)*. Figure 3.



Figure1

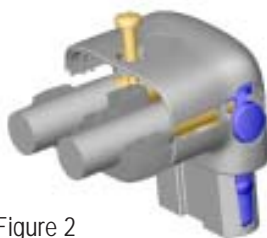


Figure 2

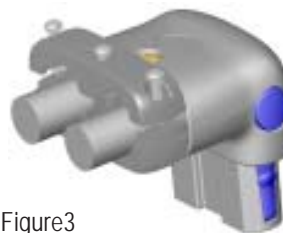


Figure3

*Nm=.114 x inch-lbs

WARNING

NEVER WORK WITH LIVE CONDUCTORS

PATENTS AND TRADEMARKS

This product is Patent Pending.

“PowerMod”, “A” in a circle and “Anderson Power Products” are registered U.S. and foreign trademarks of Anderson Power Products, 13 Pratts Junction Road, P.O. Box 579, Sterling, MA 01564 USA

1S6462 ASM-BDPSR REV01

HEADQUARTERS: 13 Pratts Junction Road, P.O. Box 579, Sterling, MA 01564 T:978-422-3600 F:978-422-3700

EUROPE: Rathealy Road, Fermoy Co. Cork, Ireland T:353-(0)25-32277 F:353-(0)25-32296

ASIA/PACIFIC: IDEAL Anderson Asia Pacific Ltd., Unit 922-928 Topsail Plaza, 11 On Sum Street, Shatin N.T., Hong Kong T:852-2636-0836 F:852-2635-9036

www.andersonpower.com